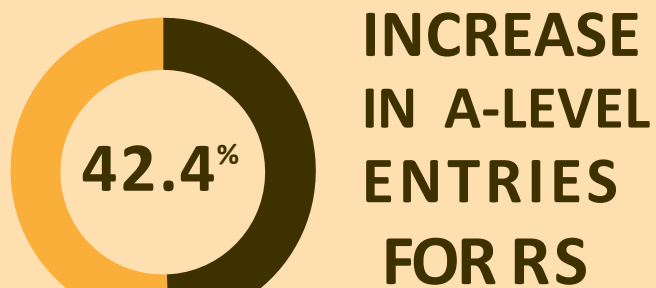


A REVIEW OF THE PERFORMANCE OF RELIGIOUS EDUCATION



VALUE OF THE QUALIFICATION

SINCE 2010 THE NUMBER OF PUPILS
IN ENGLAND ENTERING A FULL GCSE
RS COURSE
INCREASED BY **30%**



INCREASE
IN A-LEVEL
ENTRIES
FOR RS

SINCE 2003

MORE THAN
GEOGRAPHY,
LAW AND HISTORY ²



RE IN PRIMARY AND
SECONDARY SCHOOLS
ENABLES PUPILS TO
TAKE THEIR PLACE
WITHIN A DIVERSE
MULTI-RELIGIOUS
AND MULTI-SECULAR
SOCIETY. AT ITS BEST,
IT IS INTELLECTUALLY
CHALLENGING
AND PERSONALLY
ENRICHING. ³

OFSTED RE
RESEARCH REVIEW
MAY 2021



HIGHER ATTAINMENT
8 SCORES ON AVERAGE
IN SCHOOLS WITH
HIGHER RATES OF ENTRY
FOR GCSE RS



95% of teachers say that
the subject is more or equally
relevant than ten years ago ⁴

ACADEMICALLY RIGOROUS AND CHALLENGING,
RE STUDENTS GO ON TO STUDY AT THE UK'S
TOP UNIVERSITIES AND ENTER CAREERS IN
LAW, MEDICINE, POLITICS AND JOURNALISM ⁵



¹ <https://www.religiouseducationcouncil.org.uk/news/call-for-national-plan-as-religious-studies-gcse-entries-slip/>

² <https://www.jcq.org.uk/examination-results/?post-year=2023&post-location=>

³ <https://www.gov.uk/government/publications/research-review-series-religious-education/research-review-series-religious-education#conclusion>

⁴ <https://www.natre.org.uk/news/latest-news/how-satisfied-are-re-teachers/>

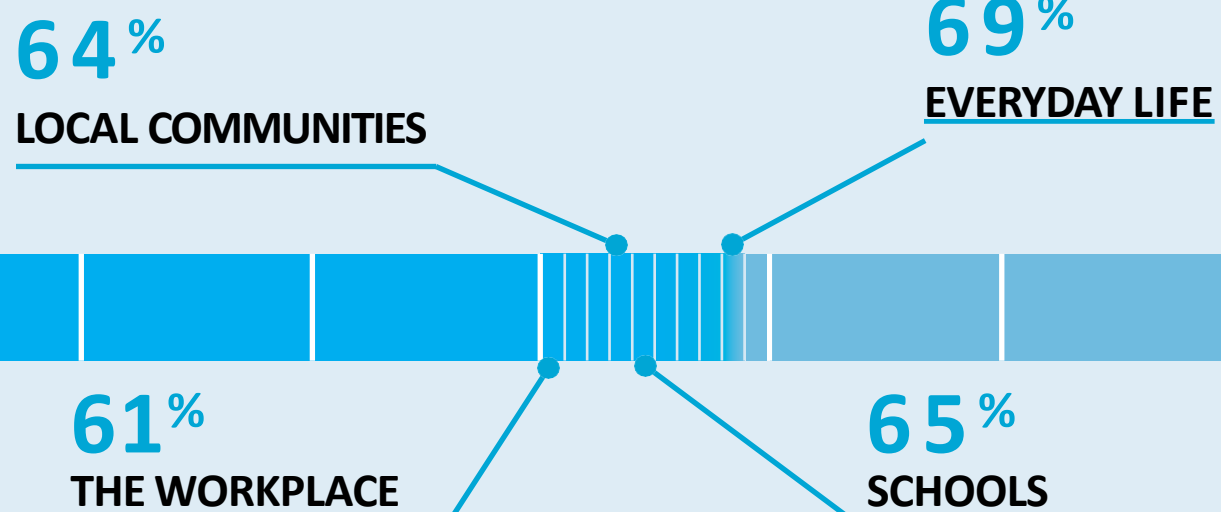
⁵ <https://blogs.bmj.com/bmj/2021/08/04/encourage-students-with-a-humanities-background-to-become-doctors/>

RE IN SOCIETY

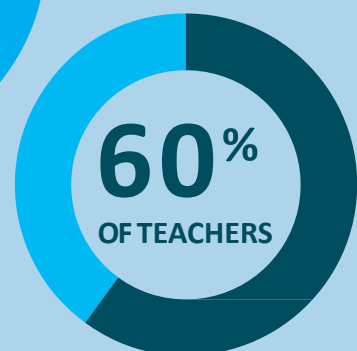
64% of the **UK adult population** think an education in **religion and worldviews** (or RE) is an important part of the **school curriculum**.⁶

HIGH-QUALITY RE
IS THE BACKBONE OF
COMMUNICATION AND
UNDERSTANDING
IN OUR SOCIETY.

AROUND TWO-THIRDS OF UK ADULTS SAY IT'S
IMPORTANT TO UNDERSTAND THE BELIEFS OF OTHERS IN:



RE HELPS STUDENTS
UNDERSTAND AND
DEBATE THE BIGGEST
ISSUES OF THE DAY⁷



DRAW INSPIRATION
FROM DISCUSSING
TOPICS IN THE NEWS

The public also recognises RE's positive impact on society. In a 2021 survey a majority believed RE can:

- 69%** Help young people gain a better understanding of their own beliefs
- 71%** Foster mutual understanding of different beliefs among young people
- 65%** Provide young people with the opportunity to learn more about other people

GOOD RELIGIOUS EDUCATION CREATES
INDEPENDENT AND CRITICAL THINKERS, PREPARED FOR THE
DIVERSITY OF BELIEF
IN MODERN BRITAIN AND
THE WIDER WORLD.



⁶ Religion & Worldview survey by Savanta on behalf of Culham St Gabriel's Trust, June 2021

⁷ <https://www.natre.org.uk/news/latest-news/how-satisfied-are-re-teachers/>

SCHOOL PERFORMANCE

 Time spent on the subject is **improving in some areas:**

OVER 95% of primary teachers report time spent on teaching RE has increased or stayed the same

46% of academies without a religious character have reported an increase in time to teach RE⁸



The **2021 Ofsted Research Review** identified barriers to high-quality RE teaching in schools including:

Insufficient time to teach an ambitious RE curriculum



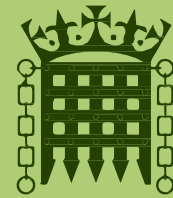
A lack of a **'scholarly approach'**

Insufficient professional development for teachers of RE

Some teachers embedding **unhelpful misconceptions**



Gaps in teacher subject knowledge



However, **too many schools** are **breaking the law** by not teaching RE

34% of academies report no timetabled RE⁹



Around 500 secondary schools still report **zero hours** of RE provision in Year 11¹⁰

RE also continues to be neglected on the school timetable in favour of EBacc subjects: **On average 5 hours** of RE are allocated to each 'teacher of RE' at **Key Stage 3** as opposed to **7** for history¹¹



SCHOOLS MUST DO MORE TO ENSURE THEY PROVIDE THE RIGHT AMOUNT OF HIGH-QUALITY RE PROVISION FOR ALL STUDENTS ACROSS YEAR GROUPS



⁸ <https://www.natre.org.uk/news/latest-news/over-95-of-primary-teachers-report-time-spent-on-teaching-re-has-increased-or-stayed-the-same/>

⁹ <https://www.gov.uk/government/publications/research-review-series-religious-education/research-review-series-religious-education>

¹⁰ <https://www.natre.org.uk/uploads/NSS%202021%20Infographic.pdf>

¹¹ www.thebritishacademy.ac.uk/documents/288/theology-religious-studies.pdf



GOVERNMENT PERFORMANCE



THE GOVERNMENT FIRMLY BELIEVES THAT RE IS
IMPORTANT. GOOD QUALITY RE IS ESSENTIAL IN
DEVELOPING CHILDREN'S KNOWLEDGE OF BRITISH
VALUES AND TRADITIONS, AND THOSE OF OTHER COUNTRIES.
RE IS A VITAL PART OF FOSTERING UNDERSTANDING
AMONG DIFFERENT FAITHS AND BELIEFS...



MINISTER OF STATE FOR SCHOOL STANDARDS, ROBIN WALKER



YET DESPITE THIS...

£0 SPENT ON RE
PROJECTS BETWEEN
2016-2021

AT A TIME WHEN:

ENGLISH:
£28.5
MILLION

MUSIC:
£387
MILLION

MATHS:
£154
MILLION

SCIENCE:
£56
MILLION

AMIDST A DECADE
LONG CRISIS IN
ATTRACTING NEW TALENT:

There has been no
training bursary for RE
for four years despite
RE teacher recruitment
targets not being met for
eleven of the last twelve
years.



AND A LACK OF RE
SPECIALISM IN SCHOOLS:

51% of lessons of RE in
secondary schools is
taught by teachers who
mainly teach another
subject. Compared to
13% of English
teachers).¹²



AND A 43% FALL IN
the number of pupils
leaving schools with a
qualification in RS

WORDS NEED TO BE BACKED UP WITH ACTION



¹² <https://www.natre.org.uk/news/latest-news/natre-calls-for-the-dfe-to-read-its-own-data-and-reinstate-bursaries-for-trainee-teachers-of-re/>¹³

<https://www.natre.org.uk/uploads/GCSE%20results%20media%20release%20FINAL%2012-08-21.pdf>

THE FUTURE OF RE



WE WANT A HIGH-QUALITY EDUCATION
IN RELIGION AND WORLDVIEWS
FOR ALL PUPILS IN ALL SCHOOLS,
TAUGHT BY WELL-QUALIFIED AND
TRAINED TEACHERS

WE CAN ACHIEVE THIS BY:

1

REINSTATING THE
TEACHER TRAINING
BURSARY FOR RE



2

SCHOOLS ENSURING HIGH-QUALITY
PROVISION BY ADOPTING THE
VISION FOR RE SET OUT IN THE 2018
CoRE REPORT RELIGION AND WORLDVIEWS:
THE WAY FORWARD

3

OFSTED WORKING WITH THOSE
SCHOOLS NOT CURRENTLY
TEACHING SUFFICIENT RE
TO ENSURE THEY COMPLY
WITH THE LAW

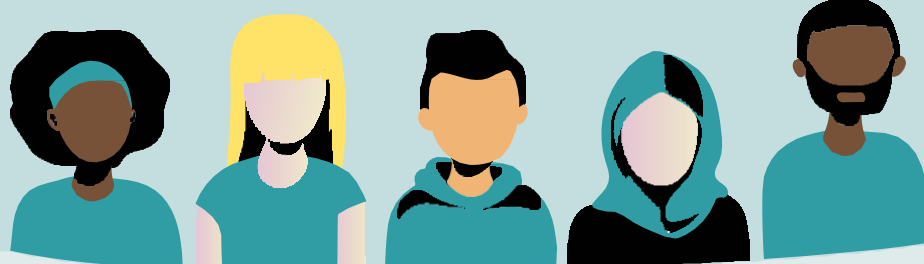
4

GOVERNMENT RECOGNISING PUBLIC,
PARENT AND PUPIL SUPPORT
FOR THE SUBJECT BY PROPERLY
FUNDING IT IN LINE WITH THE
REST OF THE CURRICULUM

*I've really enjoyed the
last two years studying
RE, for not only the
deeper understanding of life
it intends, but the analytical
mind it encourages.*

NAT, YEAR 9

WHAT PUPILS SAY:



*RE is the one time
in school where
you can talk, listen
and try to make sense of
people, events and beliefs
in the world.*

SHREYA, YEAR 10

THE FINAL WORD:

*In neglecting religious education, we leave a gaping hole in our school curriculum. It leaves young people unprepared for the ethical, moral and **religious debates that influence life in modern Britain** and the wider world. Put simply, we miss an opportunity to positively enhance our children's and our society's future.*

SIR PETER BOTTOMLEY MP, FATHER OF THE HOUSE

