

Contents

Worldviews



Editorial

3 Worldviews
Lat Blaylock



Opinion

6 Posh reggae and gospel: faith in music
YolanDa Brown

10 Haunted by Christ: spiritual worldviews in literature
Richard Harries

12 The view from the grassroots of Islam
Hany El Banna

14 Worldviews: what are they and how can we teach them as well as religions?
Ruth Flanagan



For the classroom

16 Exploring varied worldviews with pupils in Early Years (4–5)
Steph Shirra

18 Visiting three places of worship in Loughborough with infants (5–7)
Fiona Moss

20 Primary Pupil Voice in RE: "What matters for you about RE?" (7–11)

22 Flying for life: the Mission Aviation Fellowship (7–16)

24 The BBC's latest offerings for RE (5–16)

26 Who is it? Where is it? Why? (7–14)
Julie Grove



Instant RE

42 The Big Bible story Holding the biblical narrative together

44 COCO a great movie to explore a worldview and life beyond death

46 Six uses of the Comic Book Bible

28 Teachers learning: good CPD for effective RE – the role of the RE Quality Mark (5–14)
Linda Rudge

30 What did the Pope and the Grand Imam teach us about RE? (11–16)
David G. Kibble

32 Making worldviews visible: female bishops, the Five Ks and the hijab as examples (11–16)
Kate Christopher

34 FriendshipNotFear: symbols and solidarity after the Christchurch mosque attacks (11–16)
Andrew Graystone

36 Nelson Mandela: an example in the struggle for global justice and change (11–19)
Caroline Kamana

38 The 'school gate culture war' through the lens of worldviews (11–16)
Ed Pawson

40 'Duck, bullet, vet': helping students to succeed (16–19)
Greg Barker and Kate Blackie

Next term's theme: **'Intent, implement, impact in RE'**

The January 2020 issue of *REtoday* will respond to the new inspection framework for schools, which asks simple questions: what's the intention of a school's curriculum planning? How is it implemented? What's the impact on pupils' learning and achievement? These are not just good questions for inspection, but for all RE, so we will examine the ways in which RE frames intentions, implements aims and assesses outcomes. The next issue of your magazine will explore all this and more. Got a good idea on this theme? Contact the editor straight away.



48 Big books and class displays for RE
Becky Ross



Professional Reflection

54 RE: telling a positive story
Geoff Teece

55 'A matter of discipline?' On knowledge, curriculum and the disciplinary in RE

60 What makes an effective SACRE? Or, why SACREs are important

64 Why is the teaching of RE so crucial to primary schools today? A head teacher's view



Research update

68 Darwin's Jews

69 Science and religion: reframing the conversation
Carmody Grey



Reviews

70 Religious Education for Plural Societies: The Selected Works of Robert Jackson
Bill Gent and edited by Janet Dyson



On reflection

72 Can teachers make use of research to improve teaching? Practical experiments in the RE classroom
Kevin O'Grady (with Robert Jackson, Hannah Hully, Emily Hopfinger and Ollie Paton)



For the staffroom

74 What is your worldview?

75 An existentialist perspective
Charlotte Conway

76 A Pagan perspective
Maia Miller

77 A Secularist perspective
Stephen Evans

78 A Hindu perspective
Riteshkhumar Bhatt

79 A Sikh perspective
Penny Rouvas

80 A Christian perspective
Feray Macmillan

82 The new Ofsted framework for inspection in England
Fiona Moss



Policy pages

84 What does the new Ofsted framework mean for RE? And should we weep or rejoice?
Lat Blaylock



Events and resources

86 Events

90 Resources



The big picture

94 A Hindu creation story, in a picture



Last word

96 Suspension of belief
Chris Boxley



44 **COCO**
a great movie to explore a worldview and life beyond death

40

'Duck, bullet, vet'



36

Nelson Mandela: an example in the struggle for global justice and change

42

The Big Bible story



74

What is your worldview?



Cover image
YolanDa Brown,
by Agenda (courtesy of
Midas Public Relations)

Editor
Lat Blaylock
lat@retoday.org.uk

Publications Manager
Nick Clarke

Editorial Assistant
Orion Johnson

Editorial Team
Lizzie McWhirter (Events)
Kate Christopher
Julie Grove
Chris Boxley
Ed Pawson

Advertising
advertising@retoday.org.uk

Publishing dates
Published three times a year, in
September, January and May

Published by
Christian Education
Publications

The annual subscription,
including postage, is £34.00.
For details of other RE Today
subscription and NATRE
membership packages, please
call 0121 458 3313 or email
admin@retoday.org.uk

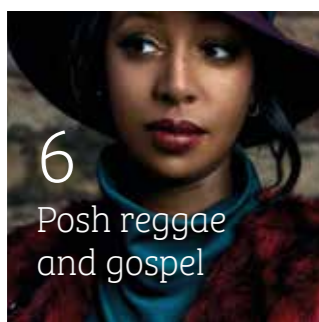
RE Today Services
5-6 Imperial Court
12 Sovereign Road
Birmingham
B30 3FH
www.retoday.org.uk

Editorial and
advertising policy
Articles in *REtoday* will
reflect a variety of viewpoints
and should not be taken
as statements of RE Today
Services policy.

Advertisements in *REtoday* and
advertising material inserted
into RE Today mailings may
not reflect the entire range of
goods and services offered to
RE teachers, and the presence of
such advertising material does
not imply endorsement of the
product by RE Today Services.

Design and layout
www.epls.design

Environmentally friendly print.
Printed using vegetable inks and
sustainably sourced paper.



6
Posh reggae
and gospel

22 Flying for life

